


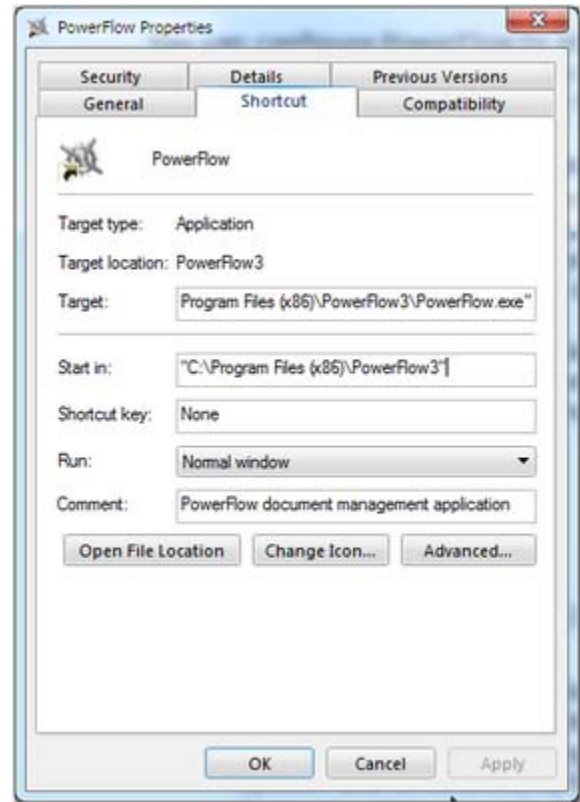
You can configure PowerFlow to start-up with certain options in place by modifying the desktop shortcut to include a command-line switch. This document explains how to do that and what those options are.

Displaying PowerFlow Shortcut Properties

Using the desktop shortcut properties dialog, you can specify one or more of the following command-line options to perform actions when PowerFlow is executed. Each option must be separated with a space. If multiple options are used and one command fails, the command line will continue to execute the remaining options.

To access the desktop shortcut properties:

1. Right-click the PowerFlow desktop shortcut () and select **Properties**.
2. In the Properties dialog, click the **Shortcut** tab (depending on your Windows operating system and environment, the Properties dialog may look similar to this example from Windows XP).



The Command Line Switches

You add the following switches, as needed, in the **Target** field. These switches can be concatenated one after the other, with a space *before* each hyphen (-) symbol.

- **-Cab<cabName>** - Opens a Cabinet by internal, display, or short name. Specifying **-Cab** followed by a cabinet name will open the specified cabinet immediately after launching (make sure it is a cabinet within the vault opened with the **-Vlt** switch). There must be no spaces between the **-Cab** and the cabinet name and the cabinet name should be enclosed in double quotes. If you use this switch, you can also use these (the "guid" *must* be enclosed in braces):
 - **-Fld<{guid}>** - Opens a Folder by Internal Name: goes directly to a particular folder immediately after launch.
 - **-Doc<{guid}>** - Opens a Document by Internal Name: goes directly to a particular document immediately after launch.
 - **-Itm<{guid}>** - Opens an Item by Internal Name: goes directly to a particular item immediately after launch.
- **-Clean** - Forces an automatic *Clean All Cabinet Databases* on startup.

- **-Exit** - Exits the application after processing the command-line. Whenever the **-Exit** switch is used with a combination of **-Vlt**, **-ImpData**, **-ExpData**, **-Sync**, **-Import**, or **-Cab**, a PowerFlow Command File (PFC) needs to be created and authorized from the Vault Security dialog. For more information on PFC files, go to the section below regarding PowerFlow Command Files.
- **-ExpData** - Allows automated data export. The switch is followed by the name of a preset configuration, as setup in the Export Data dialog.
- **-ImpData** - Allows automated data imports. The switch is followed by the name of a mapping preset, as setup in the Import Data dialog. For example, if you created an import map called ExcelMap, then you could import it on PowerFlow launch by passing the command line:

```
PowerFlow.exe -ImpDataExcelMap
```

- **-Import<pflPath>** - Imports a vault from the specified file name and path.
- **-Ini<IniPath>** - Enables the "shared executable on server" implementation, where the PowerFlow executable (powerflow.exe) is placed in a shared folder on the server. Use the **-Ini** switch with a path statement to point to the local workstation (or Citrix/Term Server) for the PowerFlow INI file.
- **-LogAppend** - Begins logging, by appending to the existing log file. If a log file already exists (PowerFlow.log), then the new log information will be appended to the end of that file. If the log file does not exist, it will be created.
- **-LogClose** - Closes the log file and disables logging after the entire command-line has been processed. This command is optional and, if not specified, logging will continue to run for the rest of the application session. Note that this *only* disables logging and closes the log file; it does *not* delete the log file.

In situations where the **-Exit** command is included on the command line (to launch PowerFlow, do something, and then close PowerFlow), we recommend *not* using **-LogClose**, since the session is going to end anyway and the added information in the log file will indicate the exact time the last line of code was executed.

For command-lines that are going to do something and then leave PowerFlow running for regular use, we recommend you *do* use **-LogClose**, since it will then only log the command-line actions and then free-up logging resources during regular use.

- **-LogNew** - Begins logging. If a log file already exists, it will be cleared. If a log file does not exist, it will be created.
- **-Sync<SyncName>** - Starts PowerFlow synchronization function and requires only the target PowerFlow synchronization name. For example:

```
PowerFlow.exe -VltC:\temp\PowerFlow.pfl -SyncArchive
```

- **-Vlt<pflPath>** - Opens a vault file: specifying **-Vlt** followed immediately by a file name and path. For example:

```
PowerFlow.exe -VltC:\temp\PowerFlow.pfl
```

...will launch PowerFlow and go directly into the named vault file. There must be no spaces between the **-Vlt** and the filename and the filename should be enclosed in double quotes. (Note that PowerFlow otherwise always opens the *last* opened vault.)

- **-Vlt<PowerFlow://url:port/vaultName>** - Connects to a remote vault. **url** and **port** are optional; if they are not specified, PowerFlow uses the values which are specified in the PowerFlow Client Connection dialog. Examples:

```
-VLT"PowerFlow://www.powerflowdb.com:20544/PF Support Master"
```

```
-VLT"PowerFlow://www.powerflowdb.com/PF Support Master"
```

```
-VLT"PowerFlow://:20544/PF Support Master"
```

```
-VLT"PowerFlow://PF Support Master"
```

- Note that any angle brackets (< >) used in a switch above indicate a *mandatory* argument to the parameter. Do *not* include the brackets in the argument. The argument must start immediately after the parameter itself, with no intervening spaces. Any argument which contains spaces must be enclosed in single or double quotes—and, while not required, we recommend that all such arguments be placed in either single or double quotes. If an argument must contain quotes, then double up on each quote to produce a single quote. For example, to open a cabinet with the name TestCab, use **-cab"TestCab"** on the command-line.

Example Start-up Options

To start PowerFlow, open a vault, import a vault and exit, starting a new log file each time (*one* line, with a space before "ImportC"):

```
PowerFlow.exe -LogNew -VltC:\temp\PowerFlow.pfl  
ImportC:\Imports\MyImport.pfl -Exit
```

To start PowerFlow, open a vault, force a DB cleanup and leave the application running for normal use, appending to the existing log and closing the log file:

```
PowerFlow.exe -VltC:\temp\PowerFlow.pfl -LogAppend -Clean -LogClose
```

PowerFlow Command File (PFC)

The PFC file is an ASCII text file with the extension **pfc**. It can be created with Notepad or other ASCII editor. A PFC file can also be created with PowerFlow using the Save Shortcut option under the main and right-click flyout menus for Folders, Documents, and Items.

A PFC file can be associated with PowerFlow using the PowerFlow installer and choosing the Advanced Options installation.

Each row of the PFC file contains only one startup switch. The arguments to the switches don't need to be included in double quotes if they contain blank spaces. A path to PowerFlow.exe does not need to be included in the PFC file like the .BAT file.

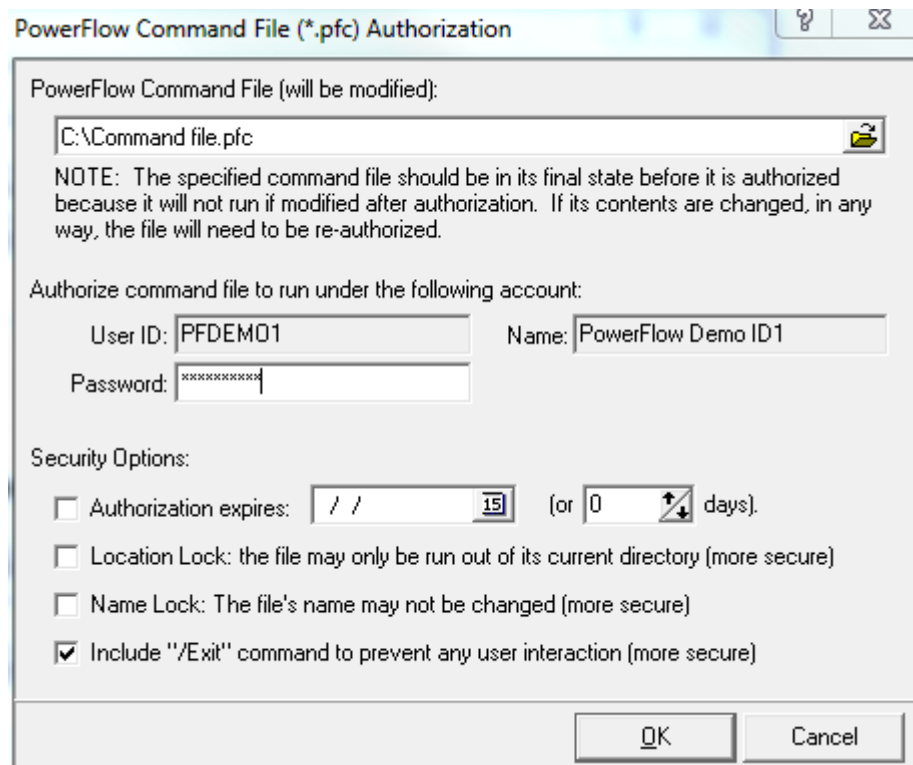
Start-up Options

Notes

Starting from PowerFlow v3.9.0.0, a PFC file has to be used instead of a regular batch .BAT file when a vault needs to be opened automatically to do some task and then close PowerFlow automatically.

Basically, whenever **-Vlt** and **-Exit** switches are used together, the PFC file *has* to be used because of the security reason. In this case, the PFC file has to be authorized from the Vault Security dialog. When a PFC file is authorized, it encrypts all the contents of the PFC file plus the user login info and other user specified options and then saves it in the same PFC file as an argument to the **-Auth** switch. If any contents of the PFC file change after it has been authorized, it will need to be re-authorized otherwise it will not work.

To authorize the PFC file after it has been created and all the necessary switches included, select **Security...** from the Vaults menu in PowerFlow. Once the Vault Security dialog displays, select **Authorize Batch File....** The PowerFlow Command File Authorization dialog displays (see image below). Provide the PFC file path, select the necessary options, and press **OK**.



PowerFlow Command File (*.pfc) Authorization

PowerFlow Command File (will be modified):

C:\Command file.pfc

NOTE: The specified command file should be in its final state before it is authorized because it will not run if modified after authorization. If its contents are changed, in any way, the file will need to be re-authorized.

Authorize command file to run under the following account:

User ID: PFDEMO1 Name: PowerFlow Demo ID1

Password: [masked]

Security Options:

Authorization expires: / / 15 (or 0 days).

Location Lock: the file may only be run out of its current directory (more secure)

Name Lock: The file's name may not be changed (more secure)

Include "/Exit" command to prevent any user interaction (more secure)

OK Cancel