
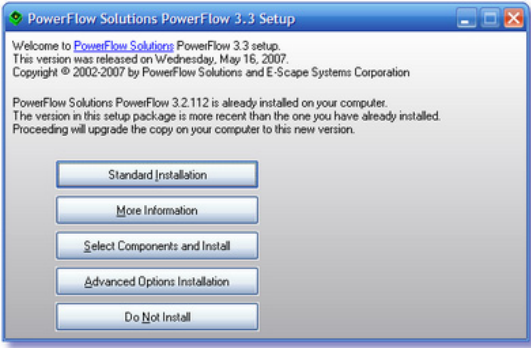
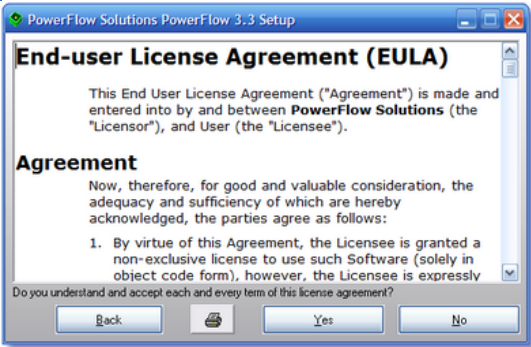
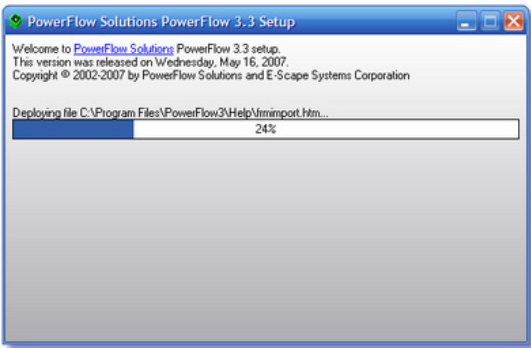
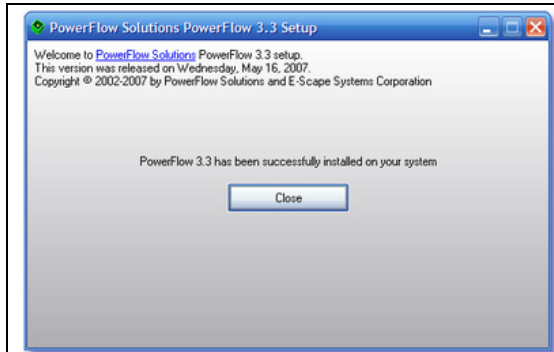


## Section 1 – Pre-installation

Map a drive for PowerFlow on the workstation (e.g., \\server\powerflow).

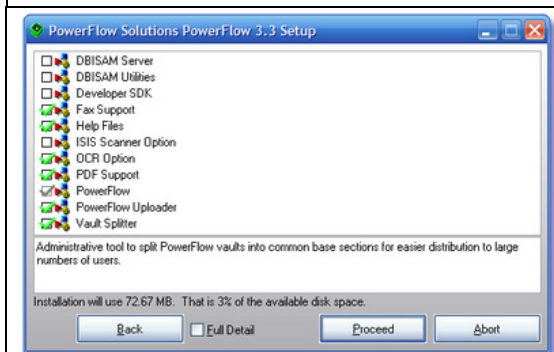
## Section 2 – Software Installation

	<ol style="list-style-type: none"> <li>From the PowerFlow drive, double-click <b>PFSetup v3.x.exe</b> (where v3.x is the version number—for example, <b>PFSetup v3.3.0.0.exe</b>) to begin the installation and display the initial PowerFlow setup screen.</li> </ol>
	<ol style="list-style-type: none"> <li>Decide which installation track fits your needs best (roll over each option to display an explanation of the option).  Click the appropriate button to proceed to the next screen and follow the steps below for the installation option you chose.  Click <b>Do Not Install</b> to quit the setup process.</li> </ol>
	<p><b>Standard Installation</b></p> <p>The Standard Installation option installs the most common features for a workstation.</p> <ol style="list-style-type: none"> <li>Review the EULA and click <b>Yes</b> to continue with the Standard Installation or <b>No</b> to quit.</li> </ol>
	<ol style="list-style-type: none"> <li>A progress bar shows you the approximate percentage of completion of the installation.</li> </ol>



3. When the installation is complete, this screen displays. Click **Close** to exit the screen and automatically start PowerFlow.

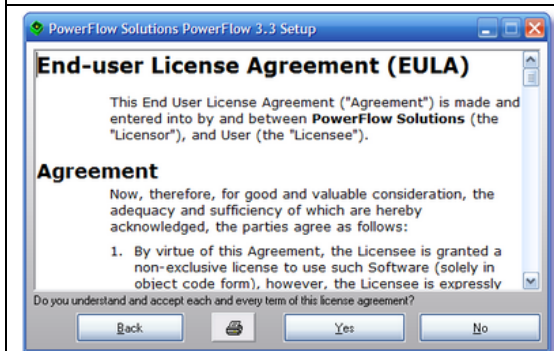
In some cases, depending on what is installed, you may need to reboot to complete the installation.



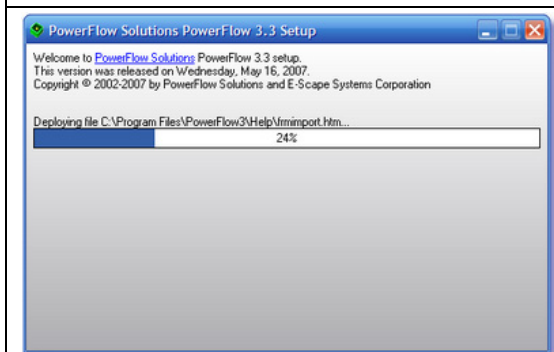
### Select Components and Install

The Select Components and Install option gives you control over what major functions are installed. To view a listing of all files to be installed, and their resulting locations, checkmark **Full Detail**.

1. Checkmark as appropriate and click **Proceed** to continue.



2. Review the EULA and click **Yes** to continue with the Select Component and Install option or **No** to quit.



3. A progress bar shows you the approximate percentage of completion of the installation.

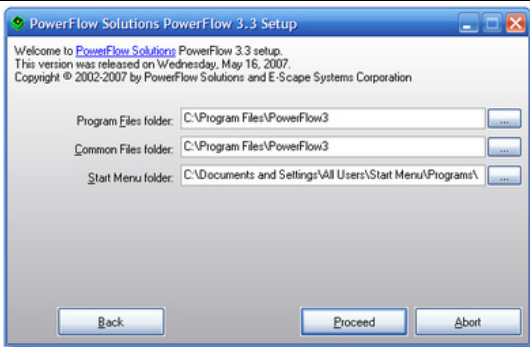
# Installation Guide

# Version 3.3 and Higher



- When the installation is complete, this screen displays. Click **Close** to exit the screen and automatically start PowerFlow.

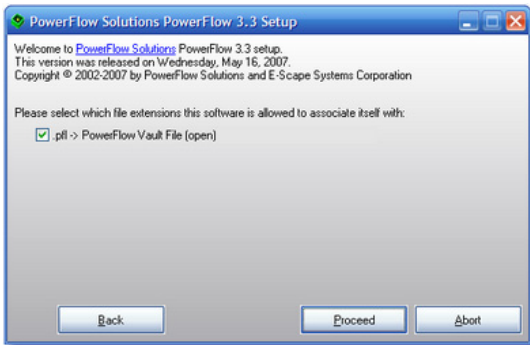
In some cases, depending on what is installed, you may need to reboot to complete the installation.



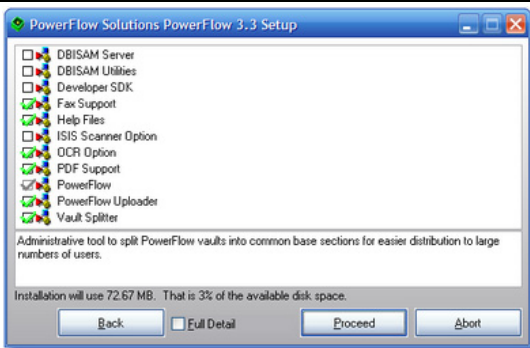
## Advanced Options Installation

The Advanced Options Installation gives you the most control over the installation, including file locations and names.

- Select the folders where you want the program installed, the common files to reside, and the location for the Start Menu (or accept the default locations). Click **Proceed** to continue.

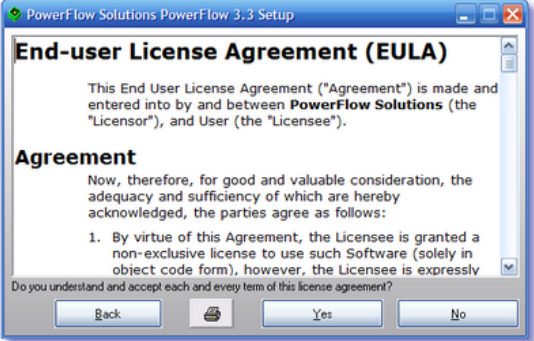
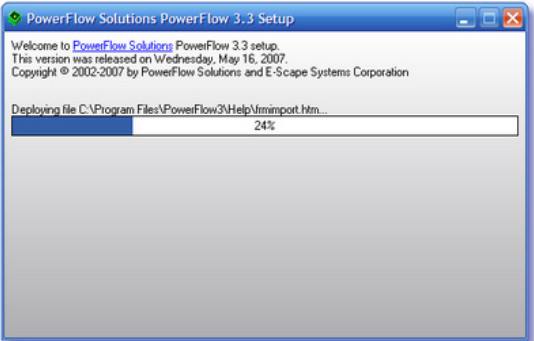



- Checkmark if you want PowerFlow to be associated with the file extension “.pfl” (recommended, and checked by default). Click **Proceed** to continue.

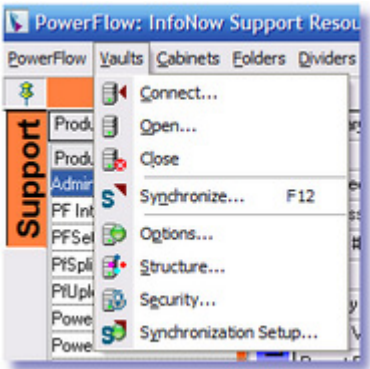


- This screen lets you select which functions to install. To view a listing of all files to be installed, and their resulting locations, checkmark **Full Detail**.

Checkmark as appropriate and click **Proceed** to continue.

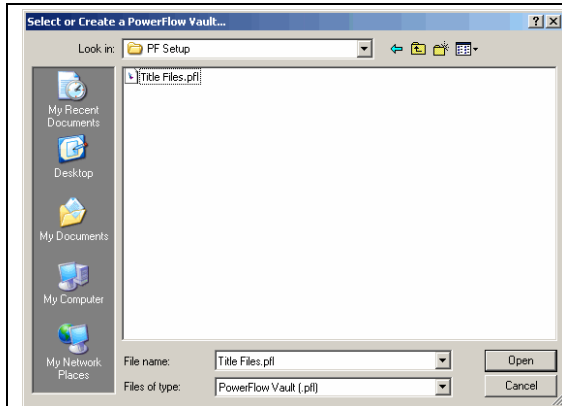
	<p>4. Review the EULA and click <b>Yes</b> to continue with the Advanced Options Installation option or <b>No</b> to quit.</p>
	<p>5. A progress bar shows you the approximate percentage of completion of the installation.</p>
	<p>6. When the installation is complete, this screen displays. Click <b>Close</b> to exit the screen and automatically start PowerFlow.</p> <p>In some cases, depending on what is installed, you may need to reboot to complete the installation.</p>

## Section 3 – Select Your PowerFlow Vault (.PFL)

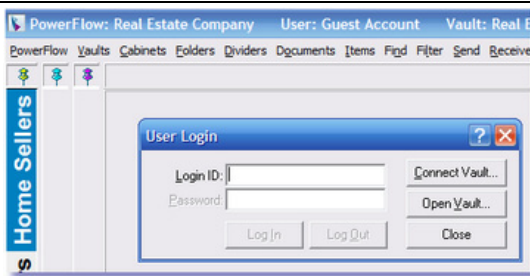
	<p>1. Click <b>Vaults Open...</b> (or <b>Vaults Connect...</b>, as appropriate).</p>
---	--

# Installation Guide

Version 3.3 and Higher



2. Select the mapped drive for PowerFlow.
3. Select the **.pfl** file (PowerFlow vault) to be opened.
4. Click **Open**.

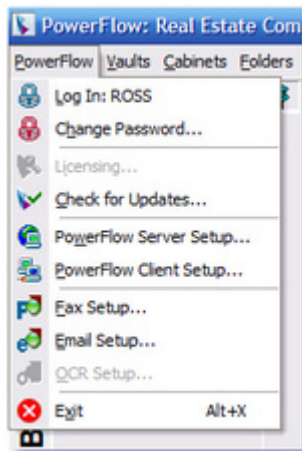


5. The screen should now display similar to this example, with a cabinet tab on the left-hand side and the User Login dialog on top.

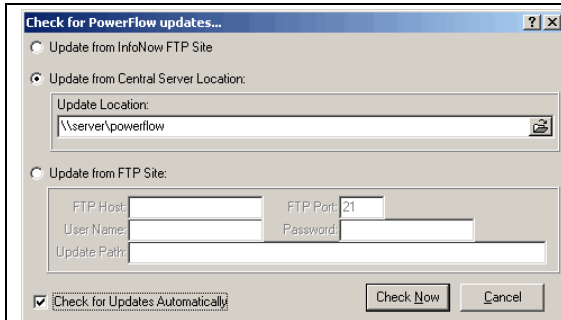


6. Enter your Login ID and Password.
7. Click **Log In**.

## Section 4 – Setting the Automatic Update Feature (Optional)



1. Click **PowerFlow|Check for Updates...** to display the Check for PowerFlow updates... dialog.



2. Checkmark **Update from Central Server Location**.
3. Select the appropriate PowerFlow drive (e.g., **\\server\powerflow**).
4. Checkmark **Check for Updates Automatically**
5. Click **Check Now**.



6. If this message displays, click **OK** to return to the PowerFlow desktop; if a message displays that there is a newer version available, follow the prompts to install it.